

OCD Series Heatless Desiccant Air Dryers

OCD Series



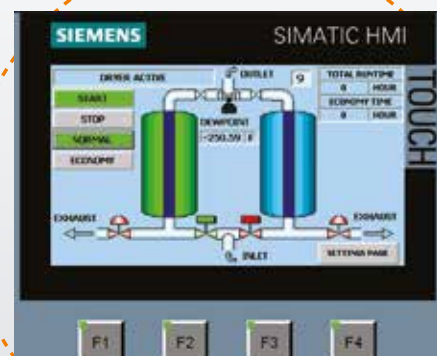
- This is a double-tank system.
- The first tank, which has high hygroscopic impact resistance and a large surface area, separates the moisture from the compressed air.
- The second tank simultaneously performs the drying process with regeneration. The tank with the saturated desiccant is dried with the help of super dry air at atmospheric pressure.
- The rate at which mufflers expel air can be adjusted according to the desired dew-point.
- No heater is used during this process. The pressure between the tanks is equalized to prevent desiccant wear.
- The air movements in the tanks are in reverse directions.

OCD series heatless desiccant dryers are designed to provide high-quality, dry, compressed air for critical applications such as the oil-gas, food-beverage and pharmaceutical industries.

Heatless desiccant dryers that provide a constant dew point of $-40\text{ }^{\circ}\text{C}$ ($-70\text{ }^{\circ}\text{C}$ optional) ensure flawless operation thanks to the reliable electronic controller on board. Equipped with special valves and high quality desiccant, this series boasts the lowest pressure drop in the industry.

PLC Control Unit

- Dew point indicator
- User-friendly touch screen
- Real time monitoring of both the cycle and the valves
- 10 language options



OCD Series Heatless Desiccant Air Dryers

OCD Series



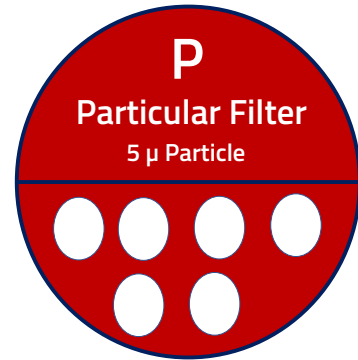
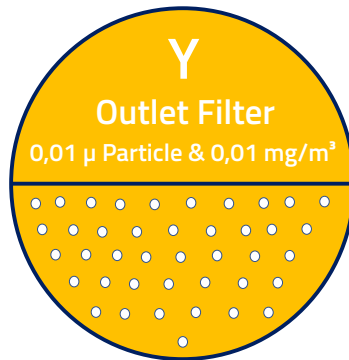
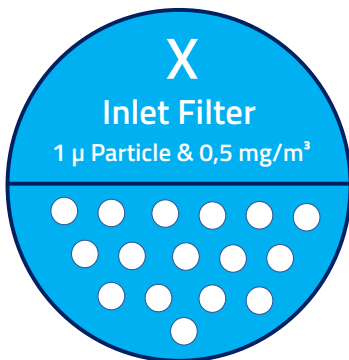
Active Alumina

- Fixed dew point with a special mix of desiccants.
- Active alumina or molecular sieve and silica gel, as chosen according to the application.

Technical Specifications

MODEL	Capacity		Filter Set	Connection Size	Pressure Drop (mbar)	Dew Point °C	Max. Inlet Temperature °C	Dimensions (mm)	Weight (kg)
	m ³ /min	m ³ /h							
OCD 130	2,17	130	GK0150 MX-MY-MP	1"	130	-40	45	757x450x1315	110
OCD 185	3,09	185	GK0200 MX-MY-MP	1"	130	-40	45	760x450x1567	130
OCD 250	4,17	250	GK0250 MX-MY-MP	1"	130	-40	45	650x760x1589	160
OCD 300	5,00	300	GK0300 MX-MY-MP	1 1/2"	130	-40	45	742x900x1615	215
OCD 360	6,00	360	GK0500 MX-MY-MP	1 1/2"	130	-40	45	742x900x1615	215
OCD 440	7,34	440	GK0500 MX-MY-MP	1 1/2"	130	-40	45	650x900x1792	340
OCD 575	9,60	575	GK0600 MX-MY-MP	1 1/2"	130	-40	45	650x900x1990	450
OCD 680	11,34	680	GK0851 MX-MY-MP	2"	130	-40	45	750x1000x2164	535
OCD 850	14,17	850	GK0851 MX-MY-MP	2"	130	-40	45	800x1050x2303	700
OCD 1000	16,67	1000	GK01210 MX-MY-MP	2"	130	-40	45	860x1120x2397	785
OCD 1250	20,84	1250	GK01820 MX-MY-MP	DN80	130	-40	45	1010x1300x2310	980
OCD 1500	25,00	1500	GK01820 MX-MY-MP	DN80	130	-40	45	1010x1300x2547	1210
OCD 1800	30,00	1800	GK01820 MX-MY-MP	DN80	130	-40	45	1010x1392x2415	1250
OCD 2200	36,67	2200	GK02200 MX-MY-MP	DN80	130	-40	45	1110x1490x2482	1525
OCD 2700	45,00	2700	GK02700 MX-MY-MP	DN80	130	-40	45	1210x1949x2245	1870
OCD 3200	53,34	3200	F3600 MX-MY-MP	DN100	130	-40	45	1210x1920x2460	2215
OCD 3600	60,00	3600	F4800 MX-MY-MP	DN100	130	-40	45	1210x1830x2596	2300
OCD 4400	73,34	4400	F4800 MX-MY-MP	DN100	130	-40	45	1210x1920x2486	2800
OCD 5000	83,34	5000	F7200 MX-MY-MP	DN125	130	-40	45	1350x1920x2960	3180
OCD 6300	105,00	6300	F7200 MX-MY-MP	DN150	130	-40	45	1650x2500x2760	4000
OCD 7200	120,00	7200	F9600 MX-MY-MP	DN150	130	-40	45	1650x2500x2924	4570
OCD 8800	146,67	8800	F9600 MX-MY-MP	DN150	130	-40	45	1650x2500x3200	5585
OCD 10800	180,00	10800	F12000 MX-MY-MP	DN200	130	-40	45	1720x2500x2720	6855

Filter Efficiency Rating



	X Inlet Filter	Y Outlet Filter	P Particular Filter
Efficiency Rating	1 micron particle removal and 0.5 mg/m ³ oil removal	0.01 micron particle removal and 0.1 mg/m ³ oil removal	5 micron particle removal (Removes desiccant particles after the dryer)

Correction Factors							
Pressure Factor F1	0.69	0.75	0.88	1	1.12	1.25	1.37
Air Inlet Temperature (°C)	20	25	30	35	40	45	50
Air Inlet Factor F2	1	1	1	1	0.8	0.75	0.59

All desiccant dryers are designed according to Pneurop conditions as per ISO7183.